

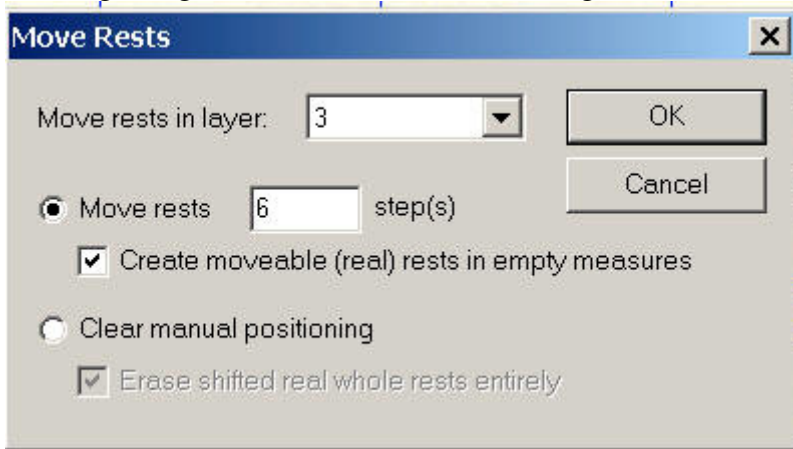
## Jazz Drum Notation- Part 2

1. Using LAYER 3, input the ensemble rhythms you want the drummer to catch, on the space just above the staff

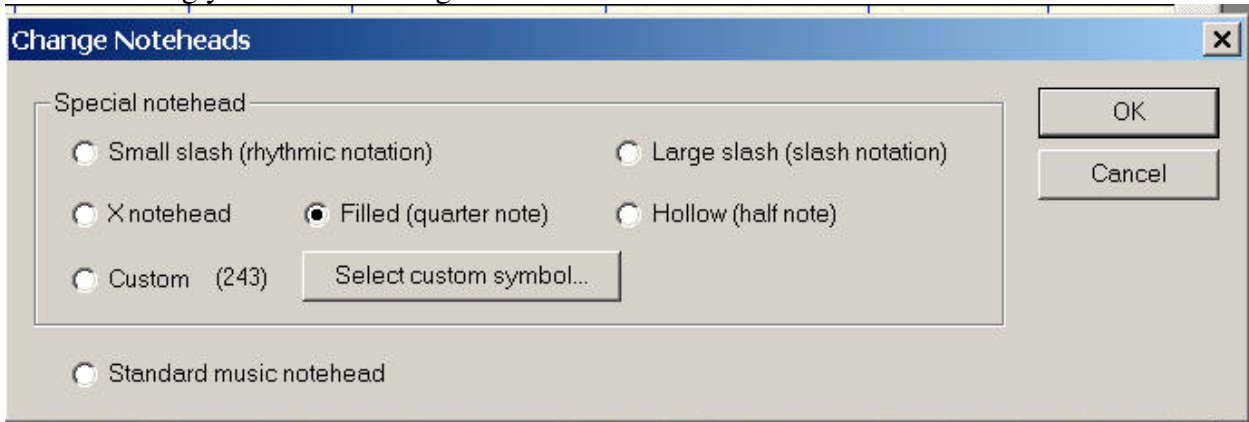


2. Select the working measures

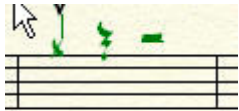
3. Using "Plug-ins/note, beam and rest editing/move rests" move the rests in layer 3 by 6 steps



4. Using "Plug-ins/note, beam and rest editing/change noteheads" select "filled (quarter note)"- this is assuming you AREN'T using half or whole notes.



5. change the stem direction to "UP"

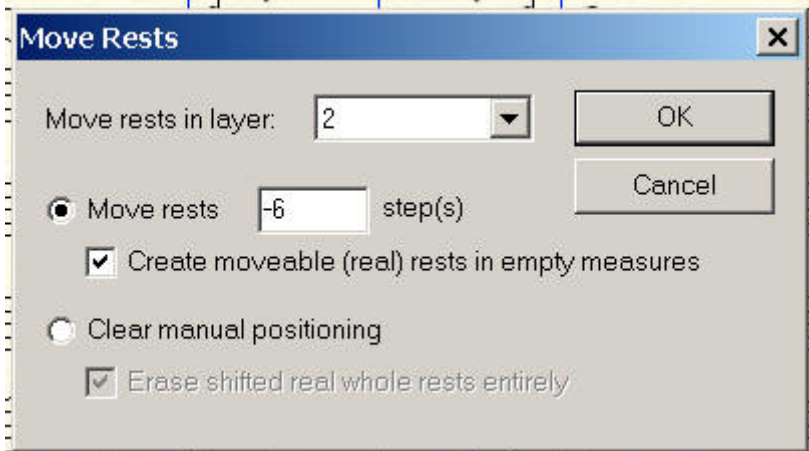


6. Using LAYER 2, input the bass drum kicks in the bottom space in the staff



7. see step2

8. see step 3, but move the rests in layer 2 by (-6) steps



9. see step 4

10. see step 5, but the stem direction will be DOWN



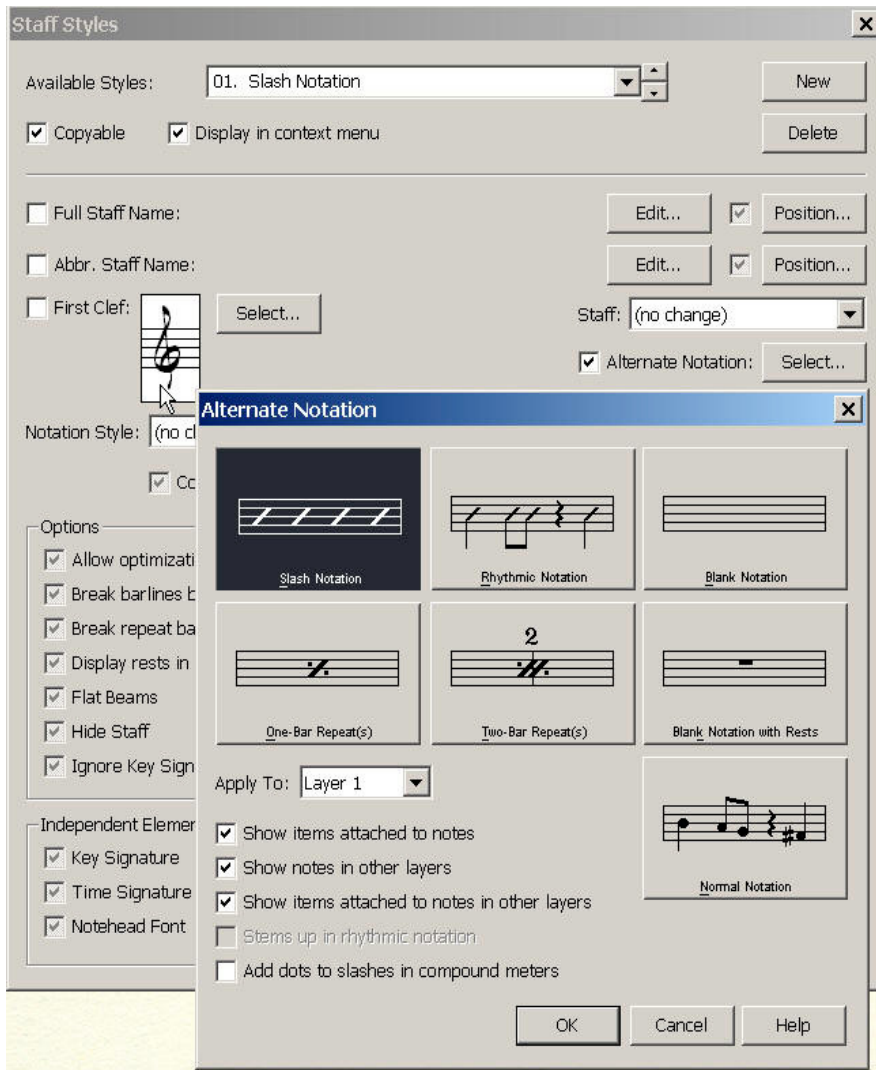
11. in LAYER 1, select the measures that contain items in either layers 2 or 3

12. in the Staff tool, select "define staff styles"

13. select "slash notation"

14. in the 'slash notation definition' box, click on Alternate notation

15. make sure all the available boxes are checked as shown below



16. apply "slash notation" to the selected measures (from Layer 1)

