

CONFIGURING "TIME" PASSAGES FOR JAZZ DRUM PARTS

(When the drum part is extracted, you will have multimeasure rests where you want to put the 'play time' {or similar} text notation)

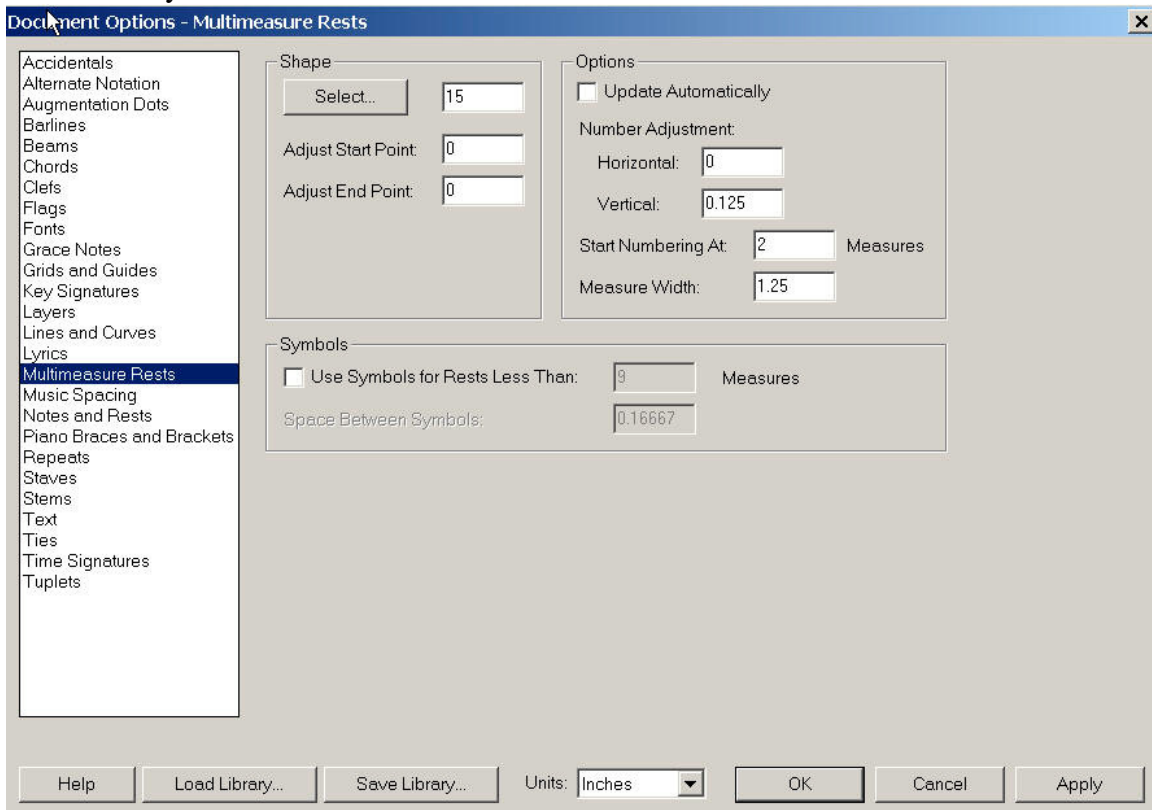
1. When scoring, leave blank any measures you just want the drummer to play "time" in.



A musical score for jazz drums in 4/4 time. The score is divided into two systems. The first system contains 15 measures, with the first measure being a multimeasure rest. The second system contains 15 measures, with the first measure being a multimeasure rest. The score includes various musical notations such as notes, rests, and accidentals. The first system is marked with 'A7' and '(SAXES)', and the second system is marked with 'D6' and '(SAXES)'. The drum part is shown on a single staff with a double bar line at the end of each system.

- 1a. Extract the part

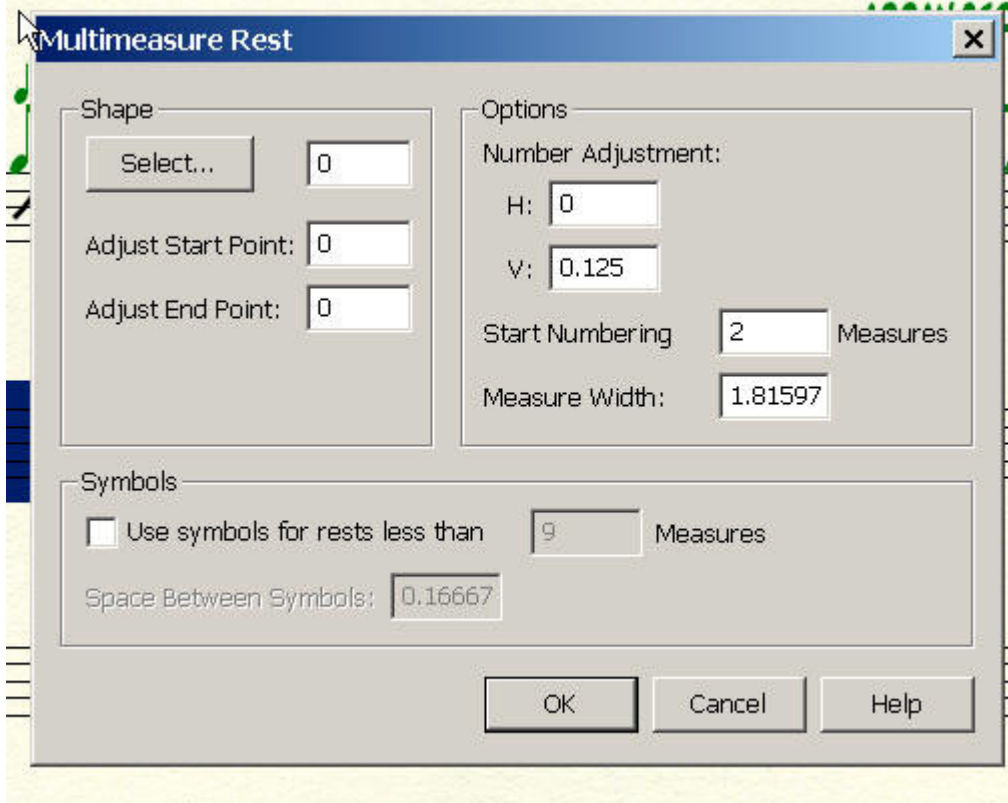
2. In the extracted part, "Document options-Multimeasure rests, make sure "update automatically" is UN-CHECKED



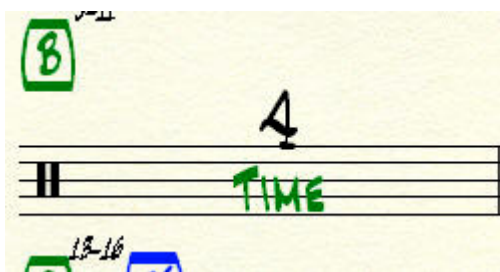
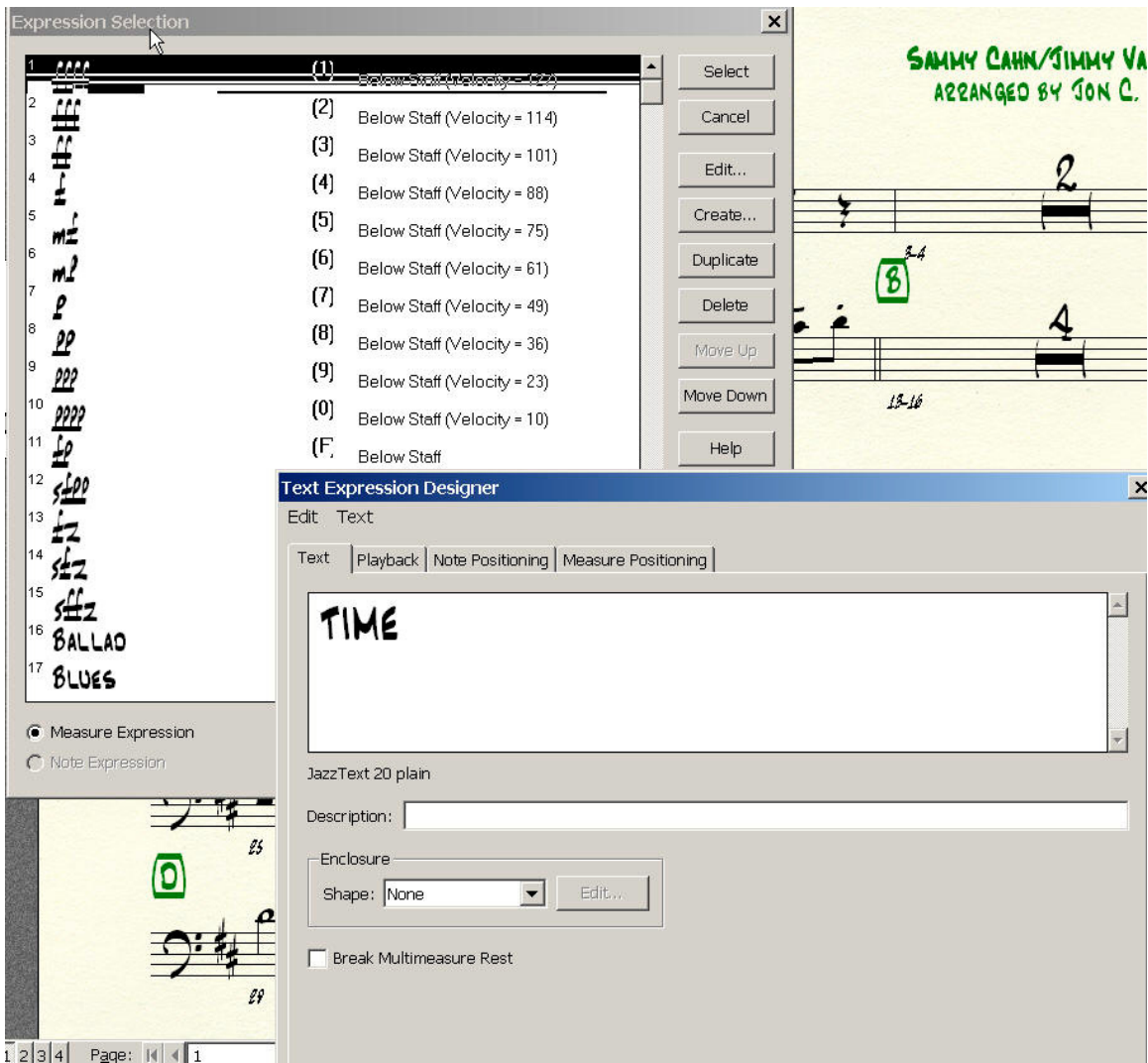
3. Click on a multimeasure rest you want to convert to "time"



4. In the Edit "multimeasure rest " menu, change the "shape number" to ZERO (0)



5. In the now-empty multimeasure rest, create a new text expression "Time" and insert it. Once you have done this, it will be available in the Text Expression menu



6. Repeat steps 2-4 for each multimeasure region you need to insert "Time" in.